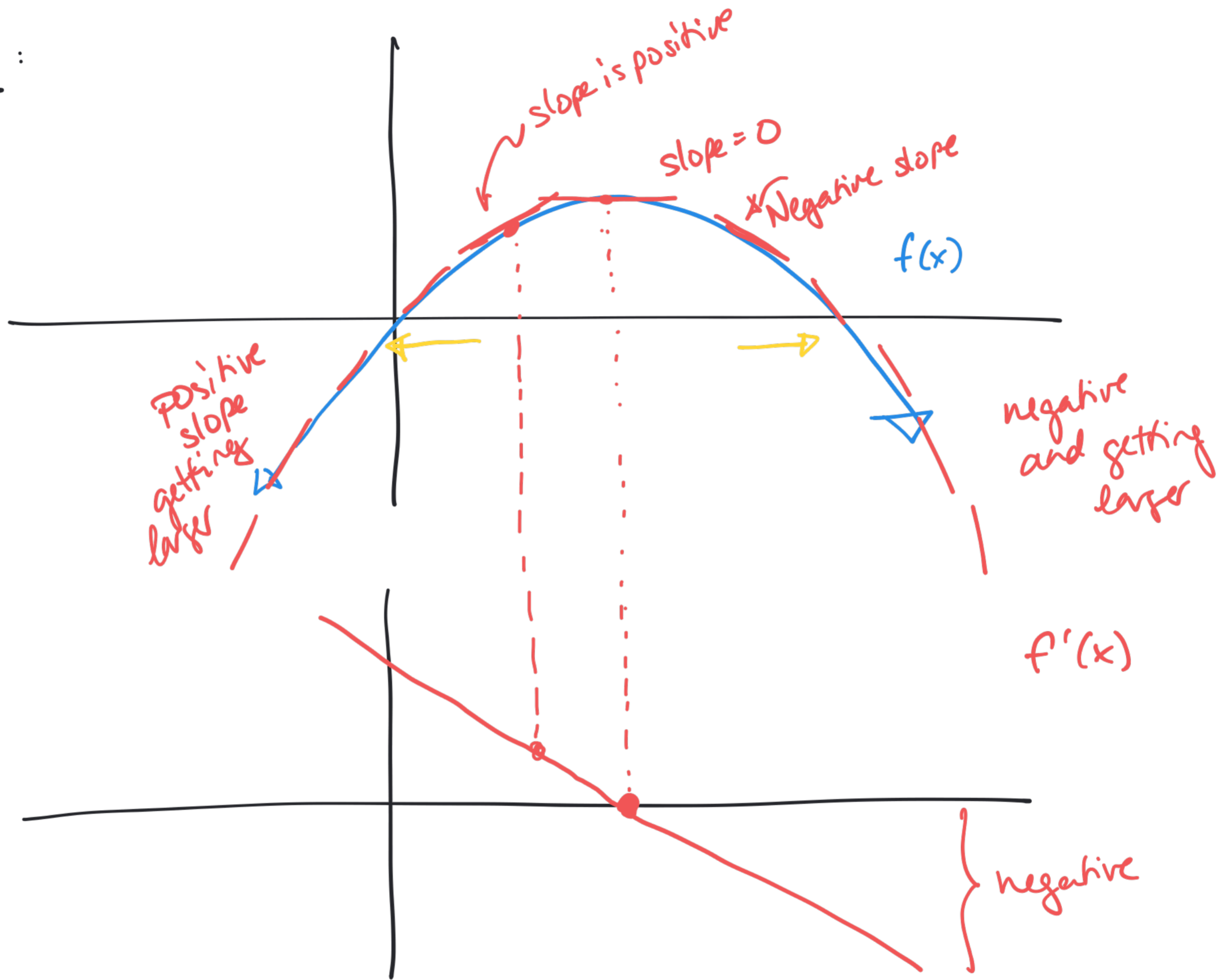
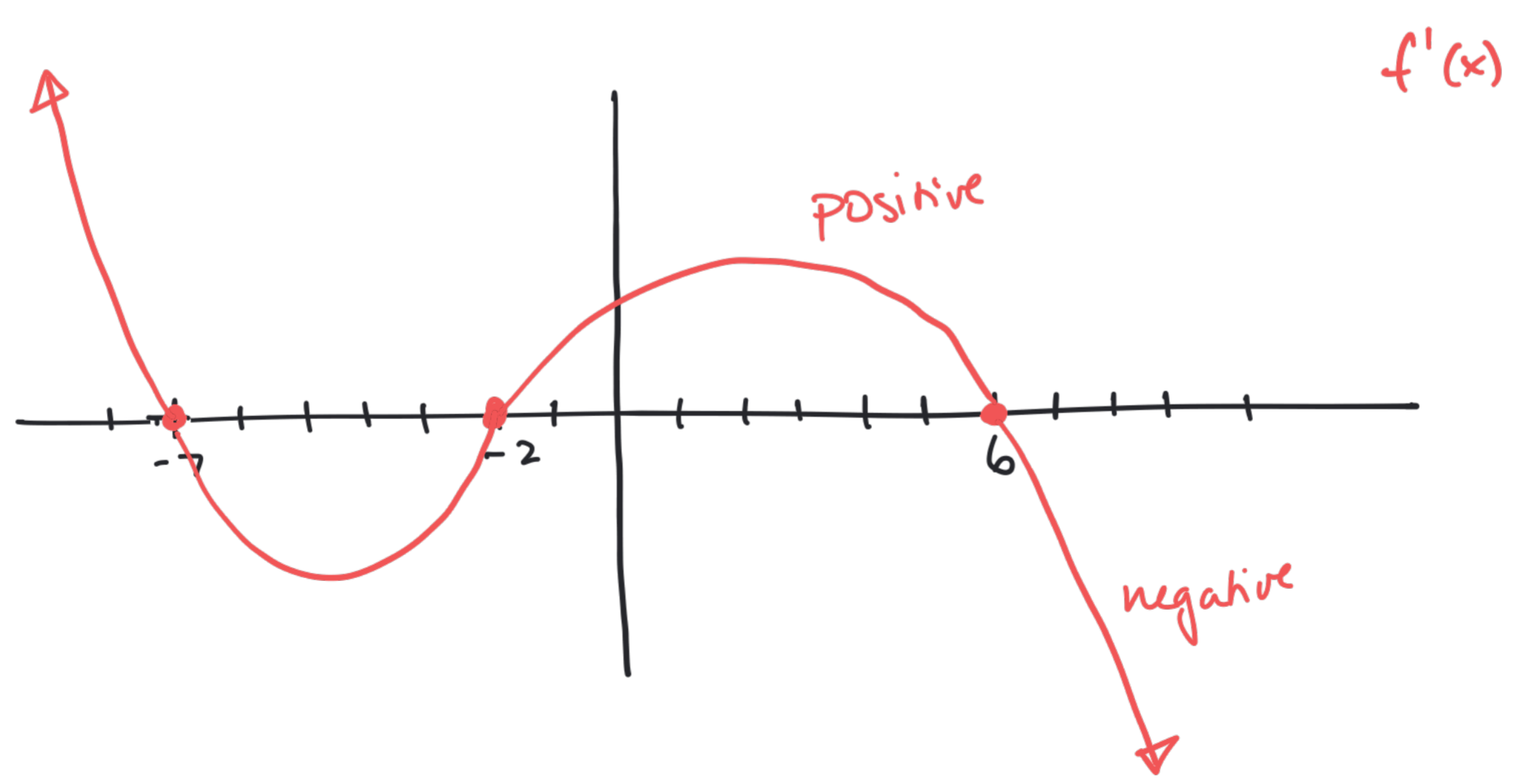
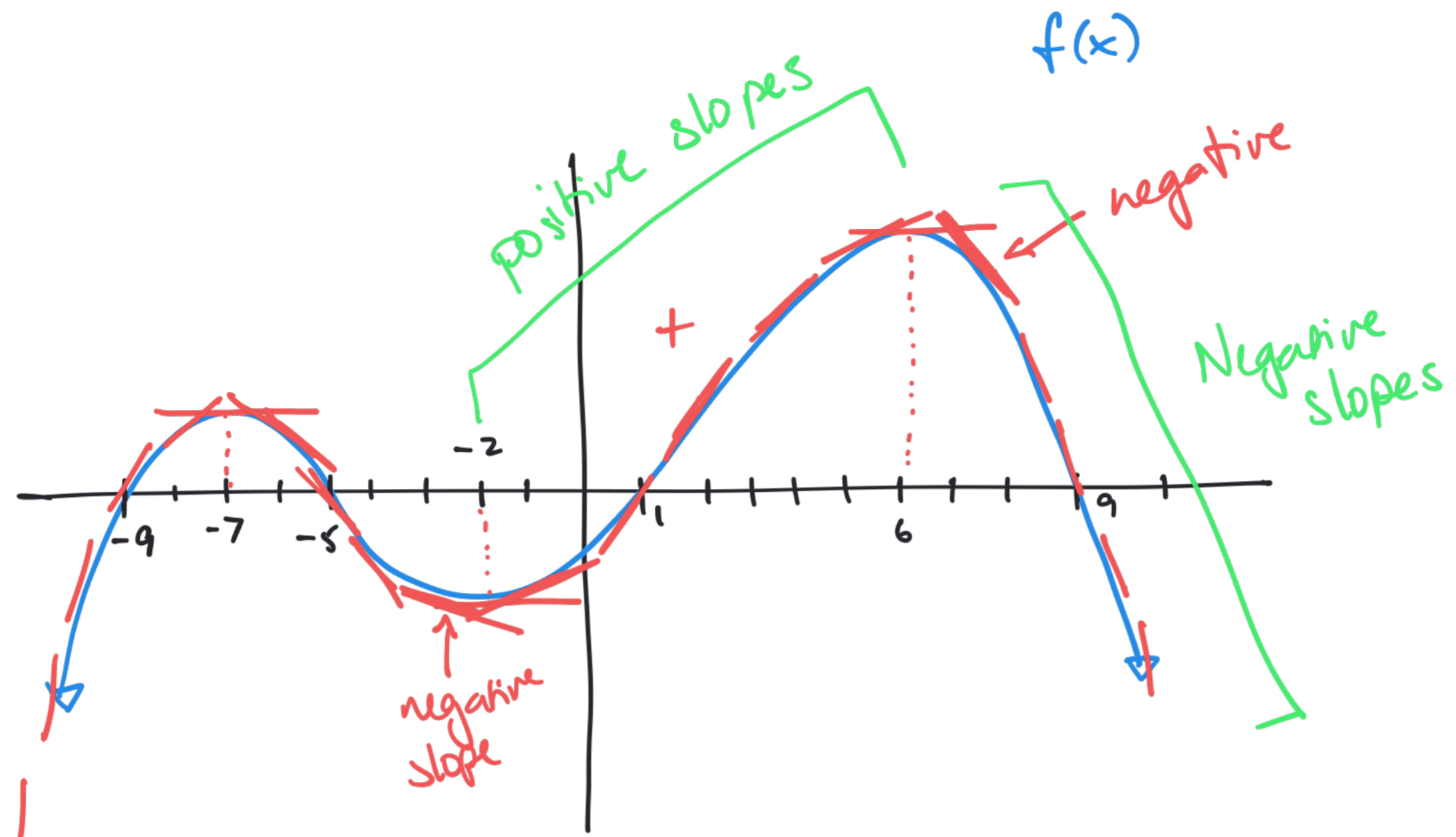


Intro Video: Section 2.8  
graphical differentiation

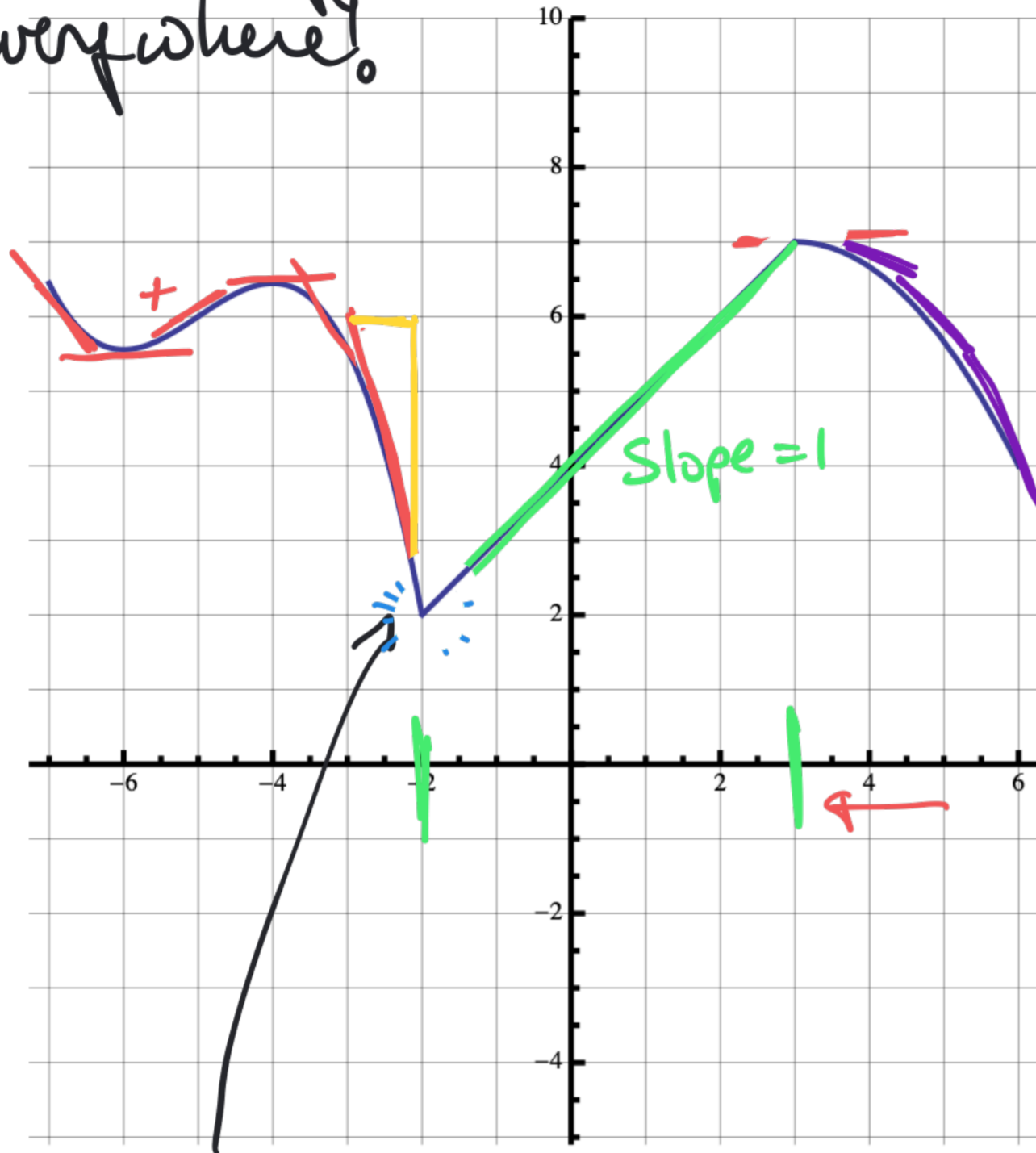
Math F251X: Calculus I

Example :





This function is continuous!  
 But not differentiable everywhere!



a corner!

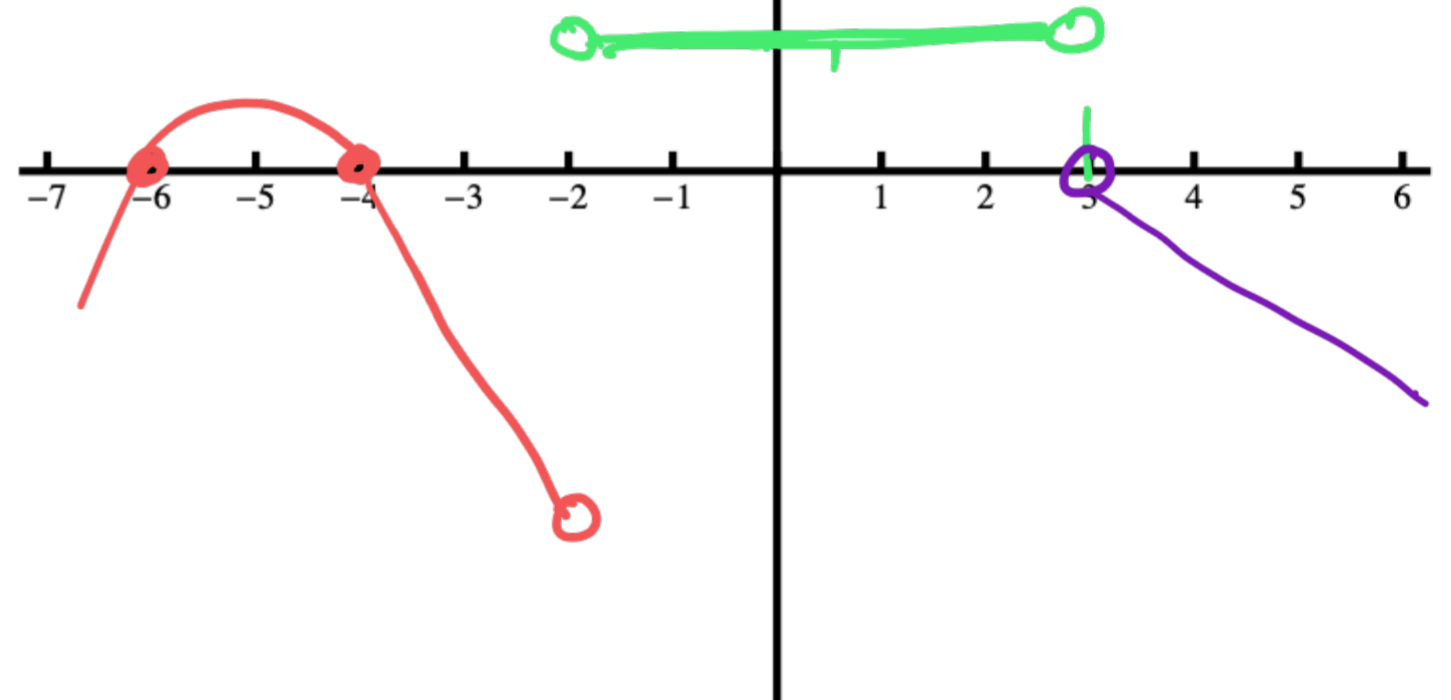
$f(x)$

Slope = 1

negative slope

$f'(x)$

The derivative is undefined at  $x = -2$  and  $x = 3$



No tangent line at a corner!  
 No way to determine the slope!

